

By Dr.Lamia Almailoni

# Intra-oral pretreatment Photographs



# “Frontal view”





# “Right & left sides”



# “Upper & Lower views”





# Radiographs



# Panoramic Radiograph

CRANEX D



# Intraoral Radiograph

## Quadrant 1



#13,12



#11

# Intraoral Radiograph

## Quadrant 2

#22



#24,25

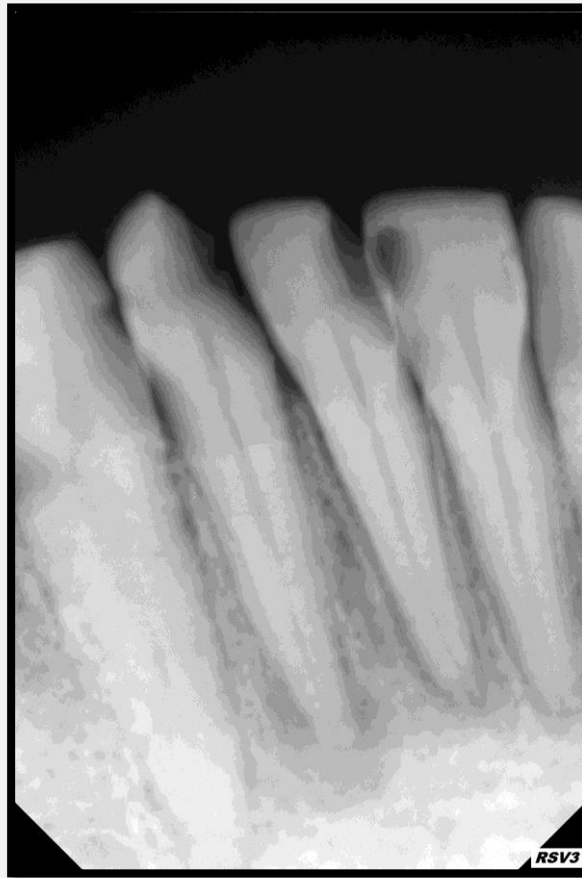




# Intraoral Radiograph

**Quadrant 3-4**

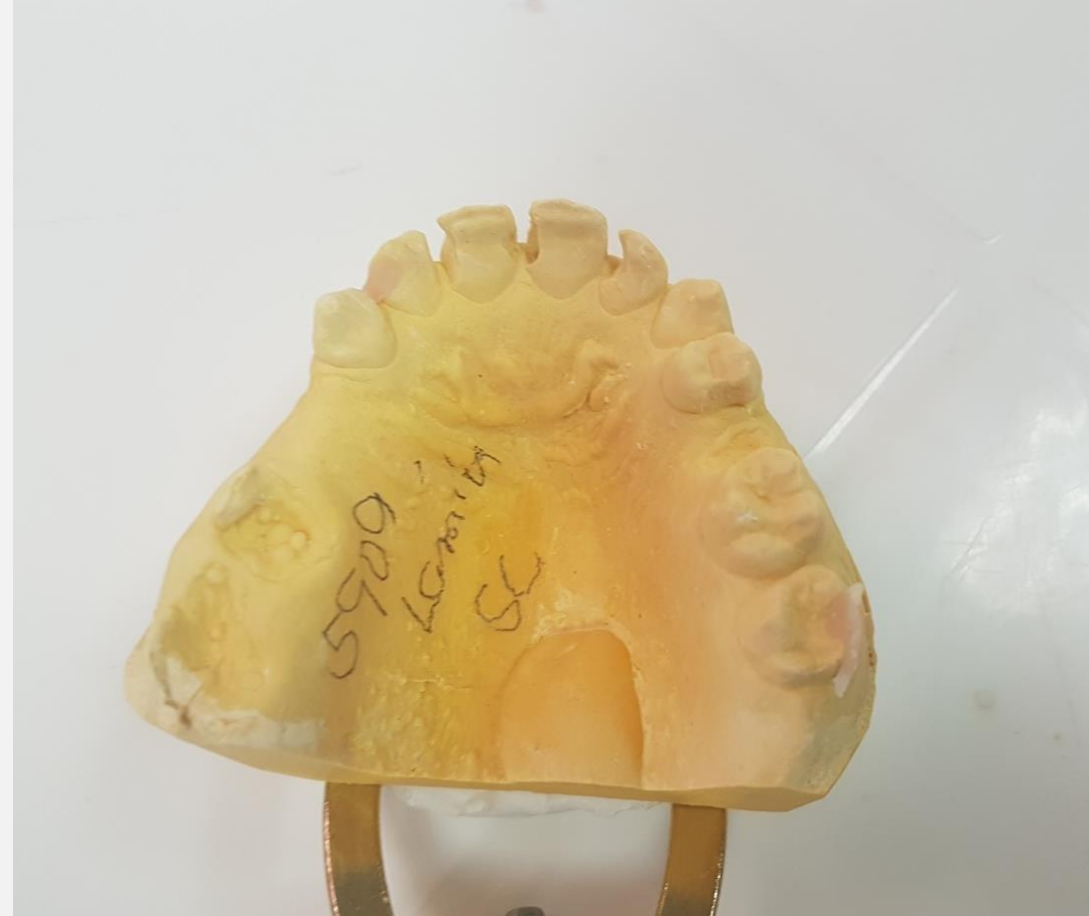
**#31,41,42**



# Diagnostic casts



# Diagnostic casts





# TREATMENT PLAN

## Phase I:

### a) Basic Therapy:

Plaque control and basic OHI.

Extraction of hopeless teeth #16,17,25,37,35,34,45.

Removal of carious lesions: -class II decay #24,26,27.

-class III decay #11,21,31,32,43.

Comprehensive Plaque control ( Flossing ) .

### b) Adjunctive therapy : CHX mouthwash

# TREATMENT PLAN

## Phase II:

- Endodontic treatment of (#22, 41, 42.)
- Alveoloplasty for lower Lt side

## Phase III:

- Post & core #22.
- **Fixed Crowns** #13,12,11,21,22,41,42. **veneer** for #23
- Kennedy class I RPD to replace missing upper and lower teeth)

## Phase IV:

Follow up and maintenance recall every 3 months.



**Completed  
clinical  
Procedures**



---

**Phase I**



Phase II



Phase III



Phase IV

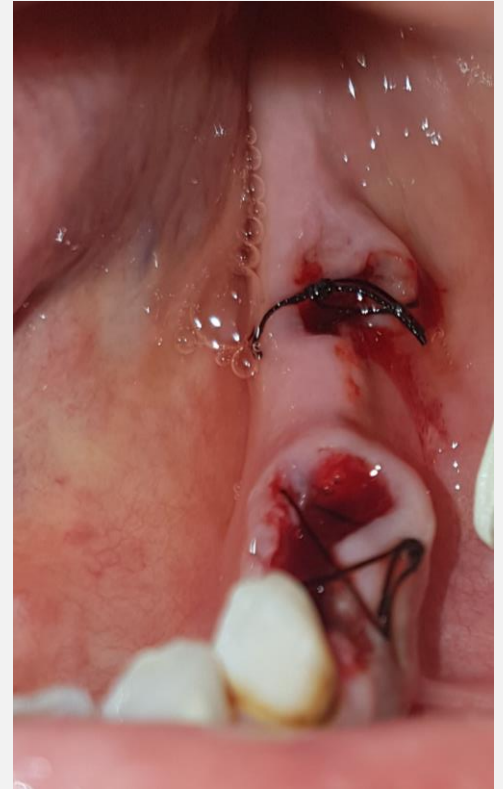
# Extractions

Extraction of #16,17,45.



# Extractions

Extraction of #25,37,35,34





# Cavities restorations

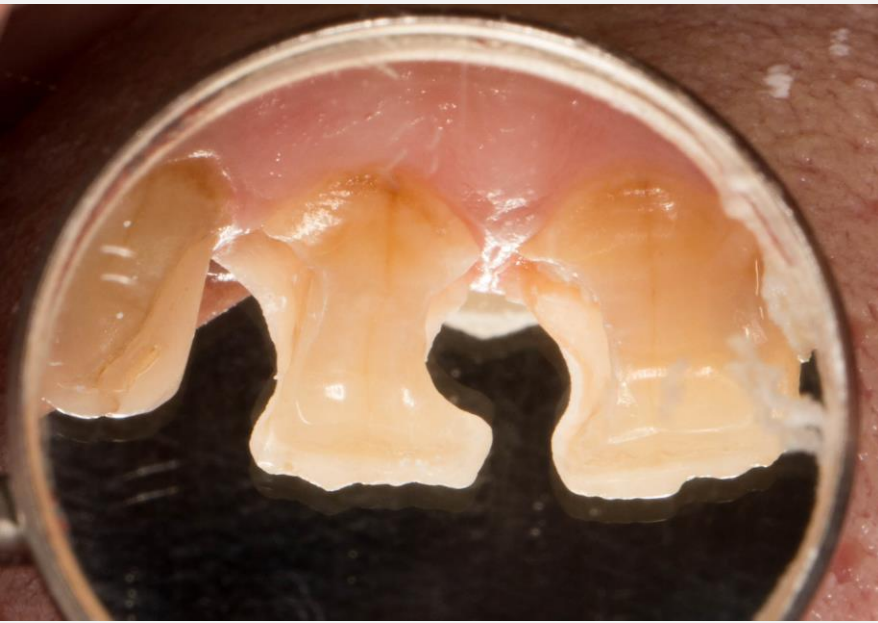
Class III cavity preparations and composite restorations of #11,21

Before:



# Cavities restorations

Class III cavity preparations and composite restorations of #11,21



# Cavities restorations

Class III cavity preparations and composite restorations of #11,21





# Cavities restorations

Class II cavity preparations and composite restorations of #24



# Cavities restorations

Class II cavity preparations and composite restorations of #26,27.

Before:



# Cavities restorations

Class II cavity preparations and composite restorations of #26,27.





# Cavities restorations

Class II cavity preparations and composite restorations of #26,27.





# Cavities restorations

Class II cavity preparations and composite restorations of #26,27.



# Cavities restorations

Class III cavity preparations and composite restorations of #31,32.



# Cavities restorations

Class III cavity preparations and composite restorations of #31,32.





# Cavities restorations

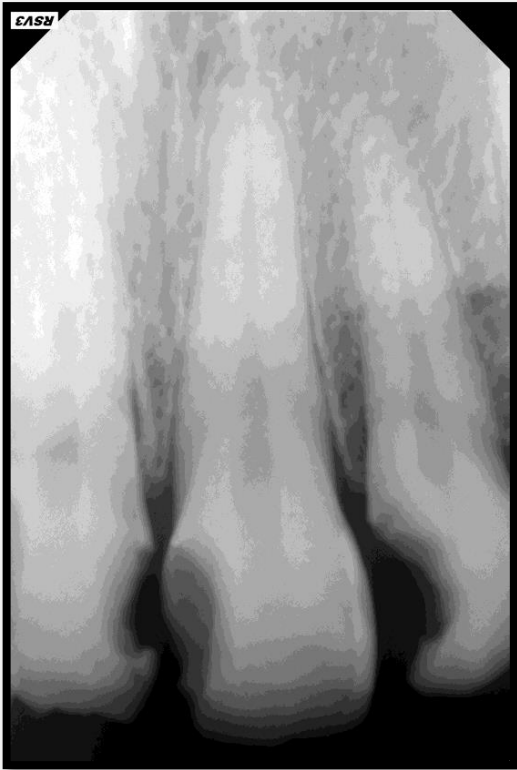
Class III cavity preparations and composite restorations of #43.





# Endodontic treatment

Tooth no. #22



Pre-operative x-ray



Access cavity



working length

# Endodontic treatment

Tooth no. #22



Master cone



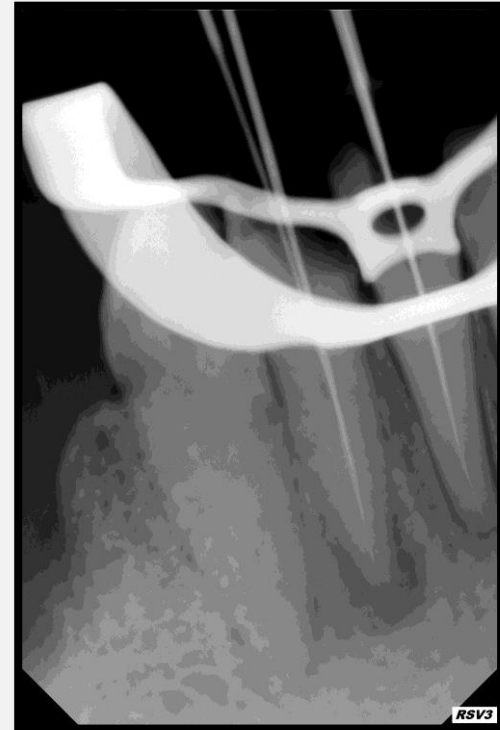
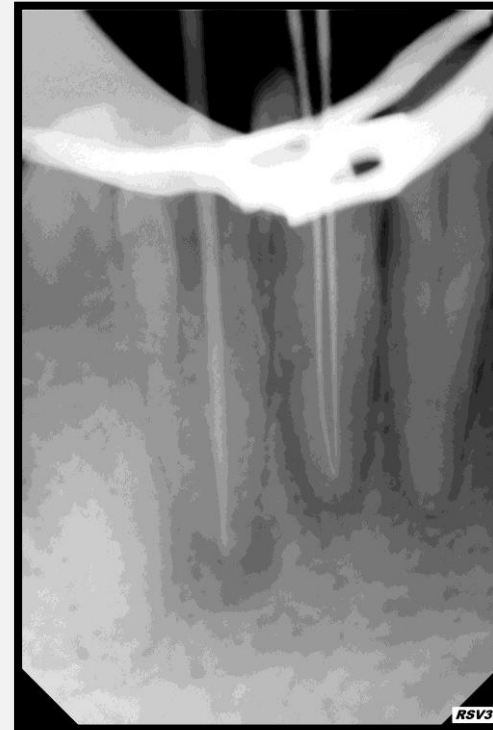
Obturation

# Endodontic treatment

Tooth no. #41,42

## Diagnosis

Asymptomatic irreversible pulpitis with apical radiolucency at #41:



Pre-operative x-ray

Access cavity

working length

# Endodontic treatment

Tooth no. #41,42



Master cone



Obturation





Phase I



Phase II



**Phase III**



Phase IV

# Post & core

Tooth no. #22.



# Post & core

Tooth no. #22.



Post cementation & core build up

# Fixed crowns

Tooth no. #41,42



preparations



# Fixed crowns

Tooth no. #41,42



Final impression

# Fixed crowns

Tooth no. #41,42



Crowns delivery

# Fixed crowns

Tooth no. #13,12,11,21,22,23



# Fixed crowns

Tooth no. #13,12,11,21,22,23

**preparations**





# Fixed crowns

Tooth no. #13,12,11,21,22,23

**preparations**



# Fixed crowns

Tooth no. #13,12,11,21,22,23

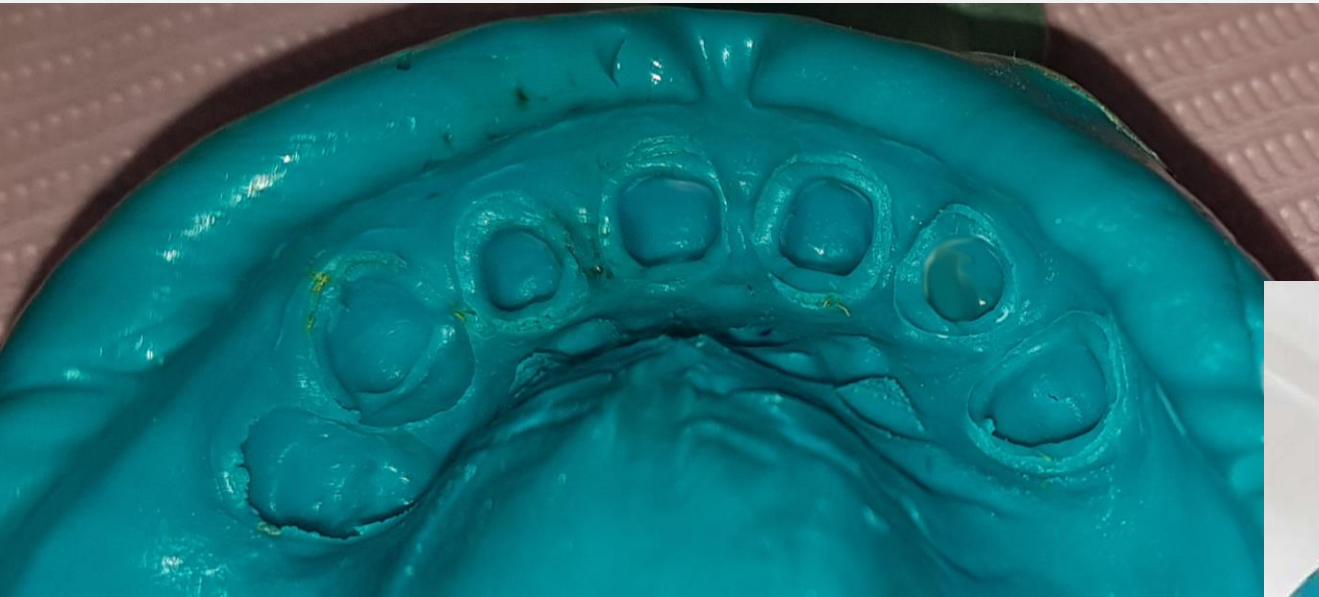
preparations



# Fixed crowns

Tooth no. #13,12,11,21,22,23

**Final impression**





# Fixed crowns

Tooth no. #13,12,11,21,22,23



**Provisional restorations**





# Fixed crowns

Tooth no. #13,12,11,21,22,23

Crowns delivery



# Removable prosthesis

## Primary Impressions:



# Removable prosthesis

## Secondary impressions





# Removable prosthesis

## Mastr casts





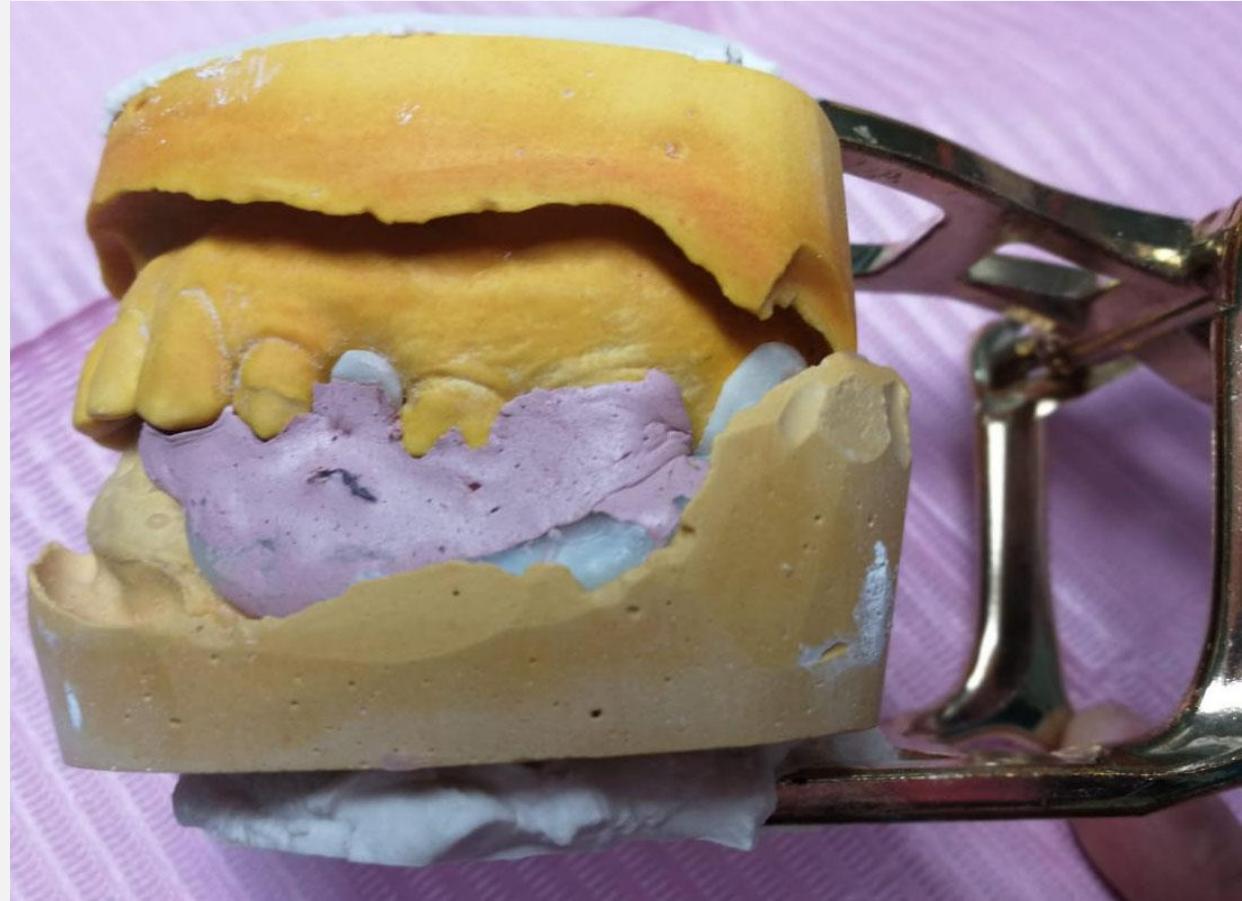
# Removable prosthesis

## Jaw relation



# Removable prosthesis

## Jaw relation



# Removable prosthesis

Try-in





# Removable prosthesis

Try-in





# Removable prosthesis

Try-in



# Removable prosthesis

## Delivery



# Removable prosthesis

## Delivery





# Removable prosthesis

## Delivery



# Removable prosthesis

## Delivery

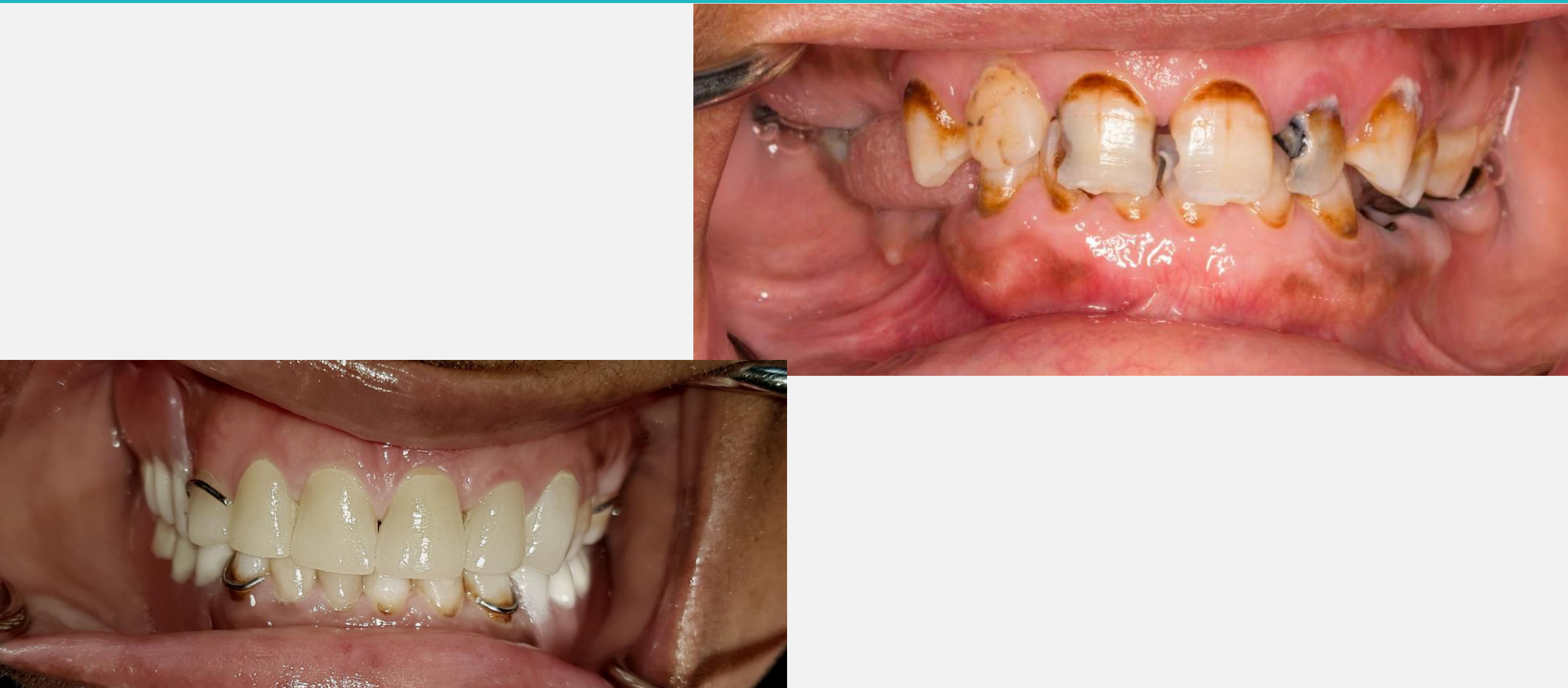








# Post operative photographs



# Post operative photographs





# Post operative photographs





