

PORTABLE MODULE CITY

CEREN ZENGİN, MELİS CAFEROĞLU, ÖZLEM SOLMAZ - IEU

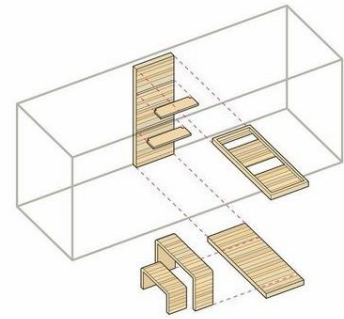
93

According to the new lifestyles of individuals of the world for adapting to COVID-19, the living spaces such as; work, home, public spaces are changing. This situation is becoming a main focus of our lives to organize the things that we do in our daily life. While considering this new covid-focused project that we will start doing, we discussed two kinds of issues: 1-When we focused on design as a building, we took the opportunity to handle most activities in the same building without going out on the street, considering the periods we focused on closing home. We can think of it as follows; For example, when we consider the folkart buildings in Bayraklı, we can see that there are many social facilities (such as Bowling, Gym, cafe) and also they are located in their offices together with the residence. In order to make this idea more comprehensive, a large building can be designed by adding balconies and terraces to meet the need for open air.

2-On the other hand, Another factor noticed in this period is how much a building can satisfy the needs; the movement, socialization and the open air could not be limited by a few meters. Therefore, we thought that the outdoor area should be designed due to this need for the open air. As a result, We thought of designing a plan-sized area that appears on the map with ideas that could be a new city design focused on new generation individuals. For example, if we consider the new generation; When we thought of a city design that could ease the new cycle between education, work and life, we thought how to proceed. We thought how we could make this rushed daily cycle covid-focused and relax at the same time, when a newly married couple sent their young children to their kindergarten, where they went to work, came back, took their children and went home.

3-Another idea is that, in this covid period, although people needed socialization, there were also those who were happy to be isolated from life with their families in their own homes. But that was not enough, there were those who felt stuck between the need for outdoor space and staying at home. As a solution to this, we have always dreamed of a city design that allows the "caravan life", "small house" logic that most people dream of, to turn it into a real lifestyle. -For instance in new World people can rent land instead of house because people mostly love their own home and want to move it to where they want. -Also in the private sector people usually change their firms or cities so with that solution people dont have to buy or rent new house and change their living areas they just have to adapt their houses to another cities

Moreover in summer time mostly big cities become ghost city and most of the people go their summer house and in the city centers, houses stay empty and these houses became unnecessary in summer so if we design such a movable houses, in summer people can move their houses to the summer villages and with that there won't be empty houses in cities so there can be more openspaces in summer in citycenters.



Due to adaptable and moveable spaces firstly we focusd on the Kind of metaterials that we need to use and by designing a certain unit size and grid system, we have designed areas suitable for growth with a wall system that can be folded and removed. First of all, we examined the panel-structured walls so that these walls can be opened, and we developed a system for these panels to fit together so that a unit could be transported as a whole. In wet areas, we left a place for the installation system by using I beam in order to achieve a certain height on the ceiling and floor. Then we designed a wall-mounted wooden furniture system that can adapt for different usage areas, and we tried to ensure that everything fit together with a 45x45 cm grid in the logic.



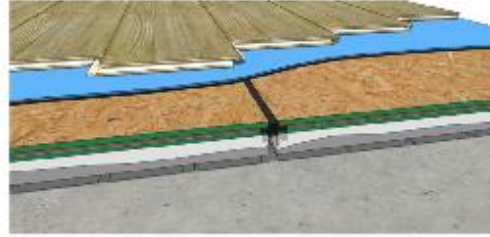
What is a Sandwich Panel?

Sandwich Wall Panel with Gypsum/Polystyrene/Gypsum composition
In the most basic terms, a sandwich panel is a panel type composed of three (or sometimes more) materials that are adhered together to form one. Sandwich panels are used in a variety of applications in the construction industry from roof panels to floor panels to the very walls that make up a building itself. Sandwich panels can also be referred to as composite panels, meaning they are formed out of more than one type of material.

UNIT STRUCTURAL LAYERS

FLOOR ELEMENTS;

- laminated parquet
- R+ insulated subfloor panel
- 2cm plywood
- steel support
- rockwool between u profiles

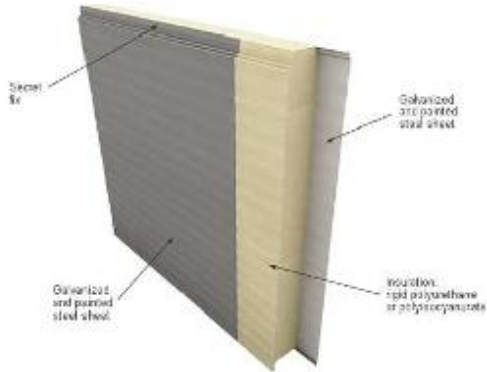
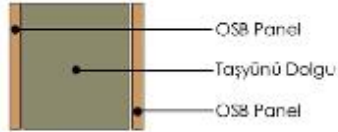


ROOF ELEMENTS;

- PU-R ROOFING SANDWICH PANEL
- WITH A POLYURETHANE CORE
- GALVANIZED STEEL PROFILES
- ROCKWOOL BETWEEN U PROFILES



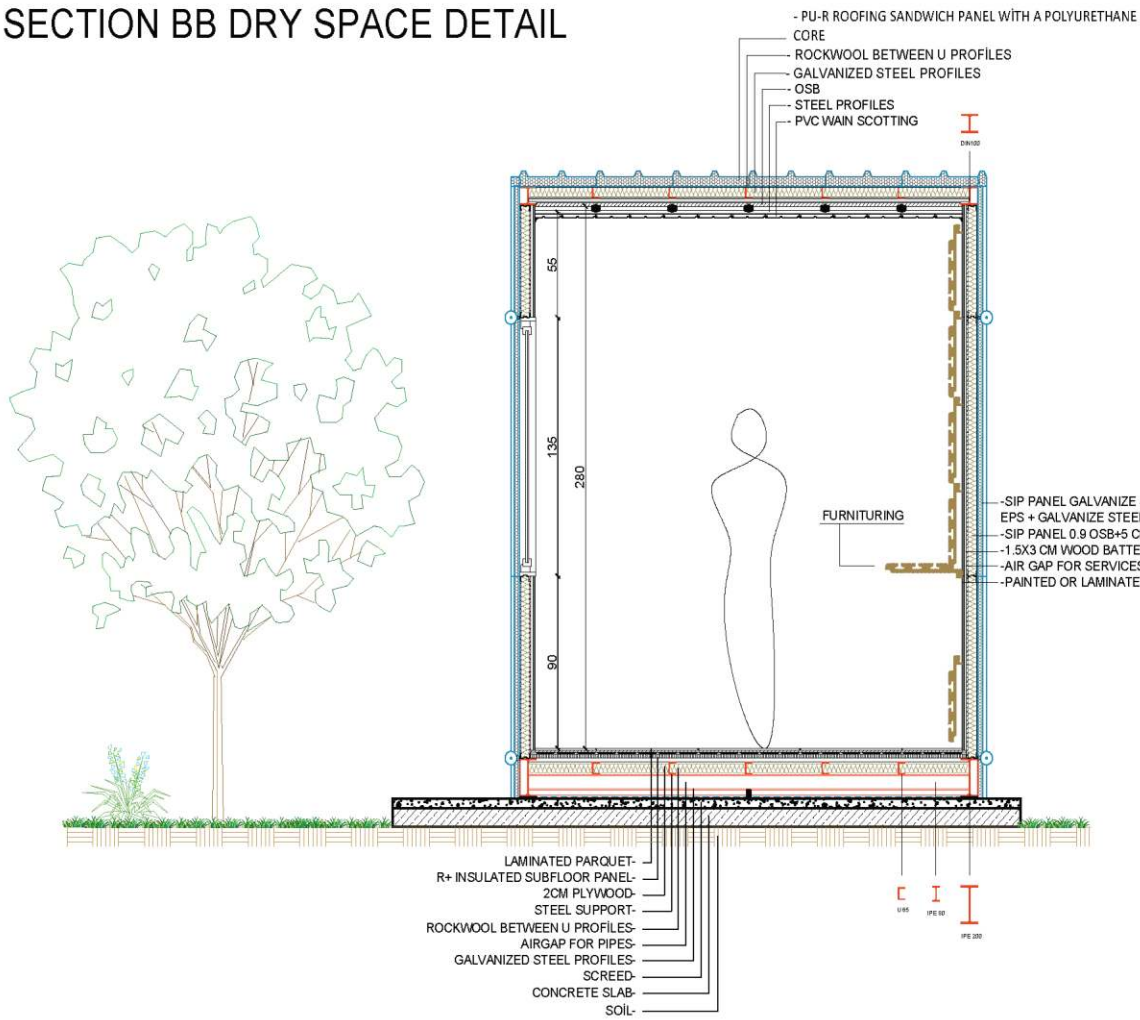
Panel cross-section



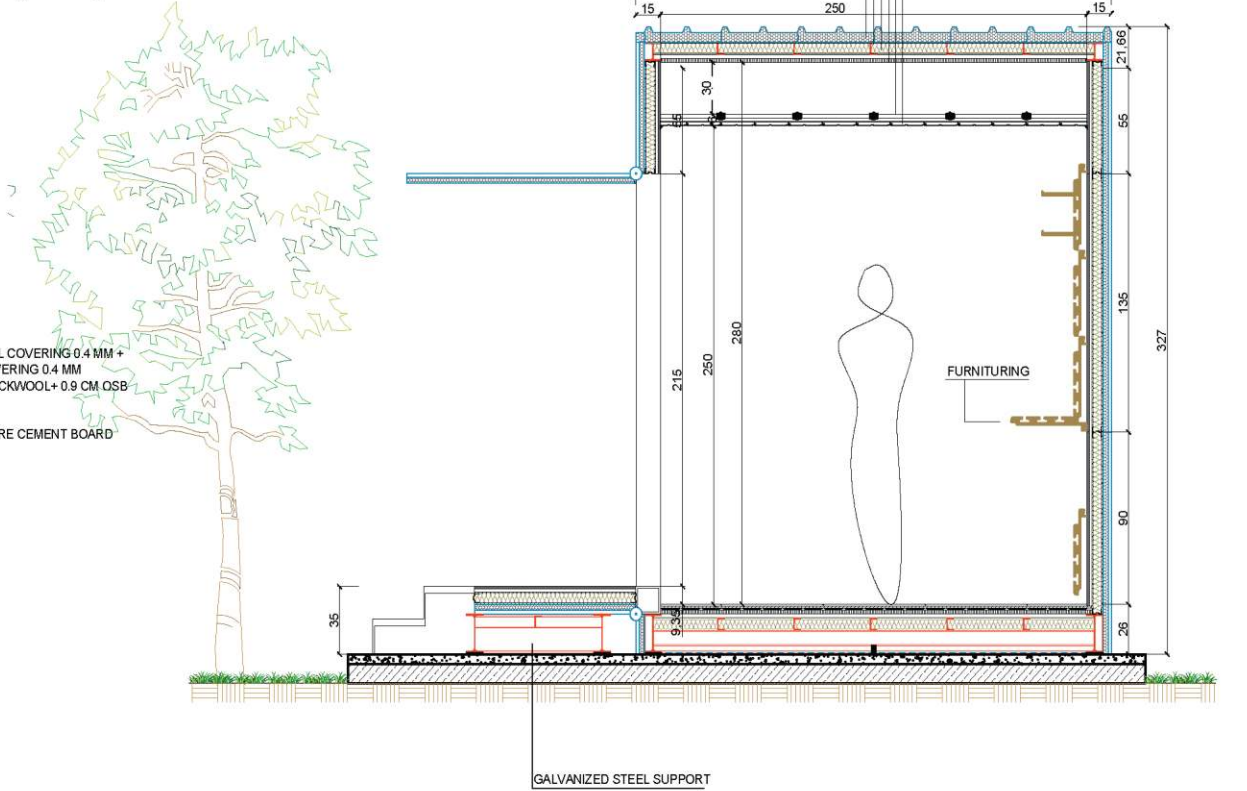
COMBINATION DETAILS



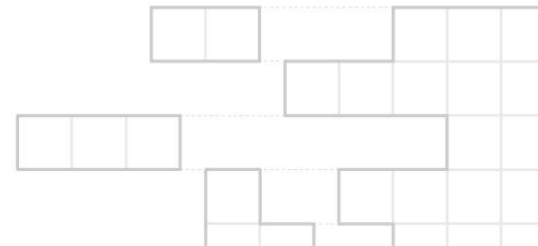
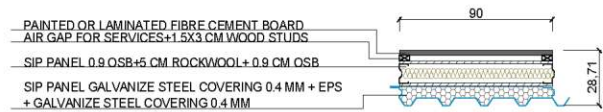
UNIT SECTION BB DRY SPACE DETAIL



UNIT SECTION BB WET SPACE DETAIL SPACE TRANSFORMATION (1/20)

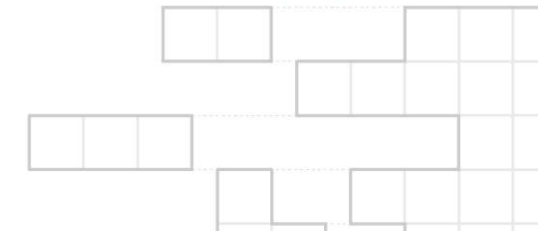
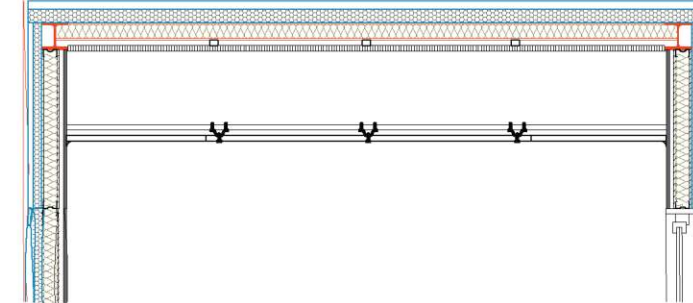
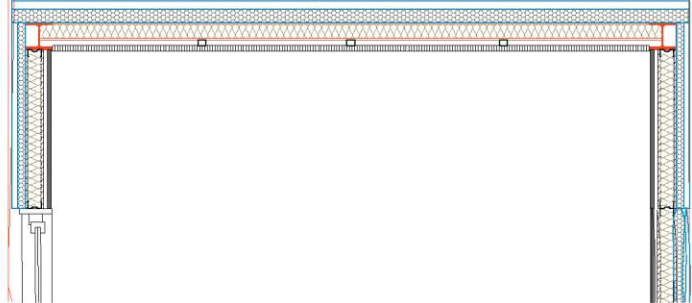
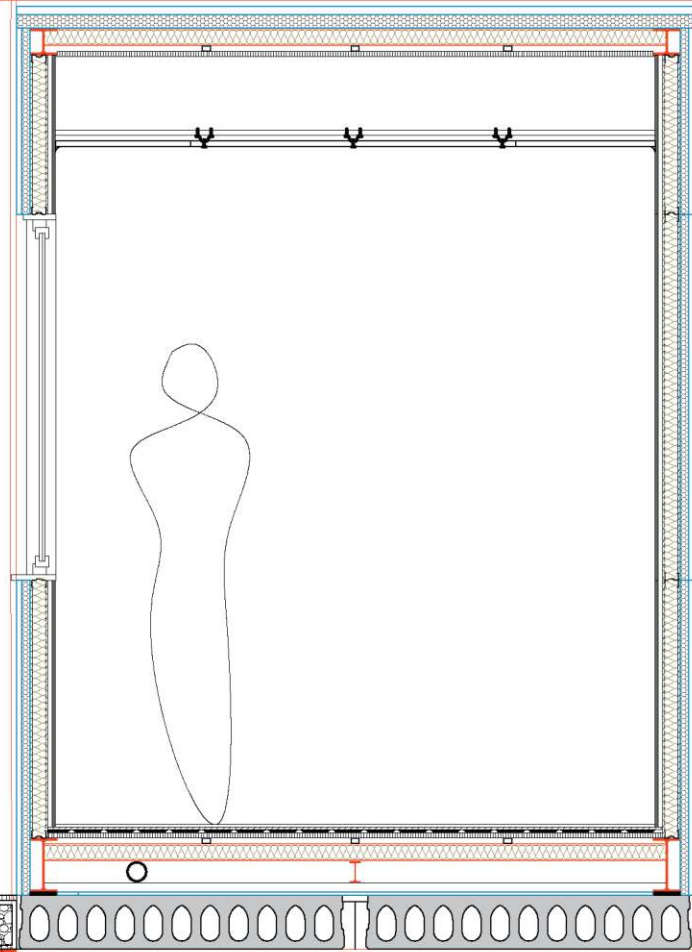
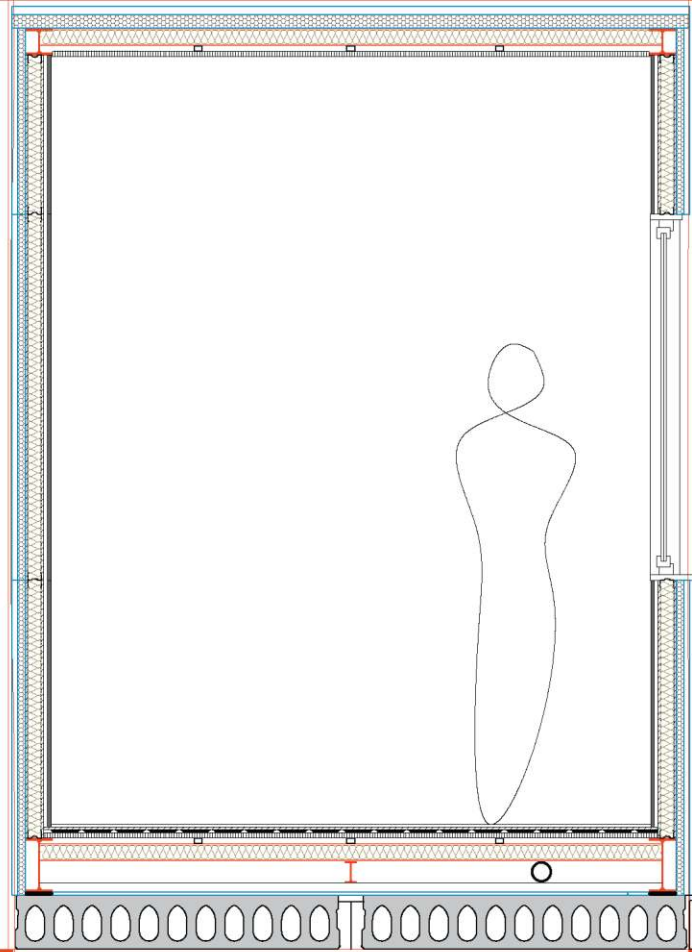


PANEL PLAN



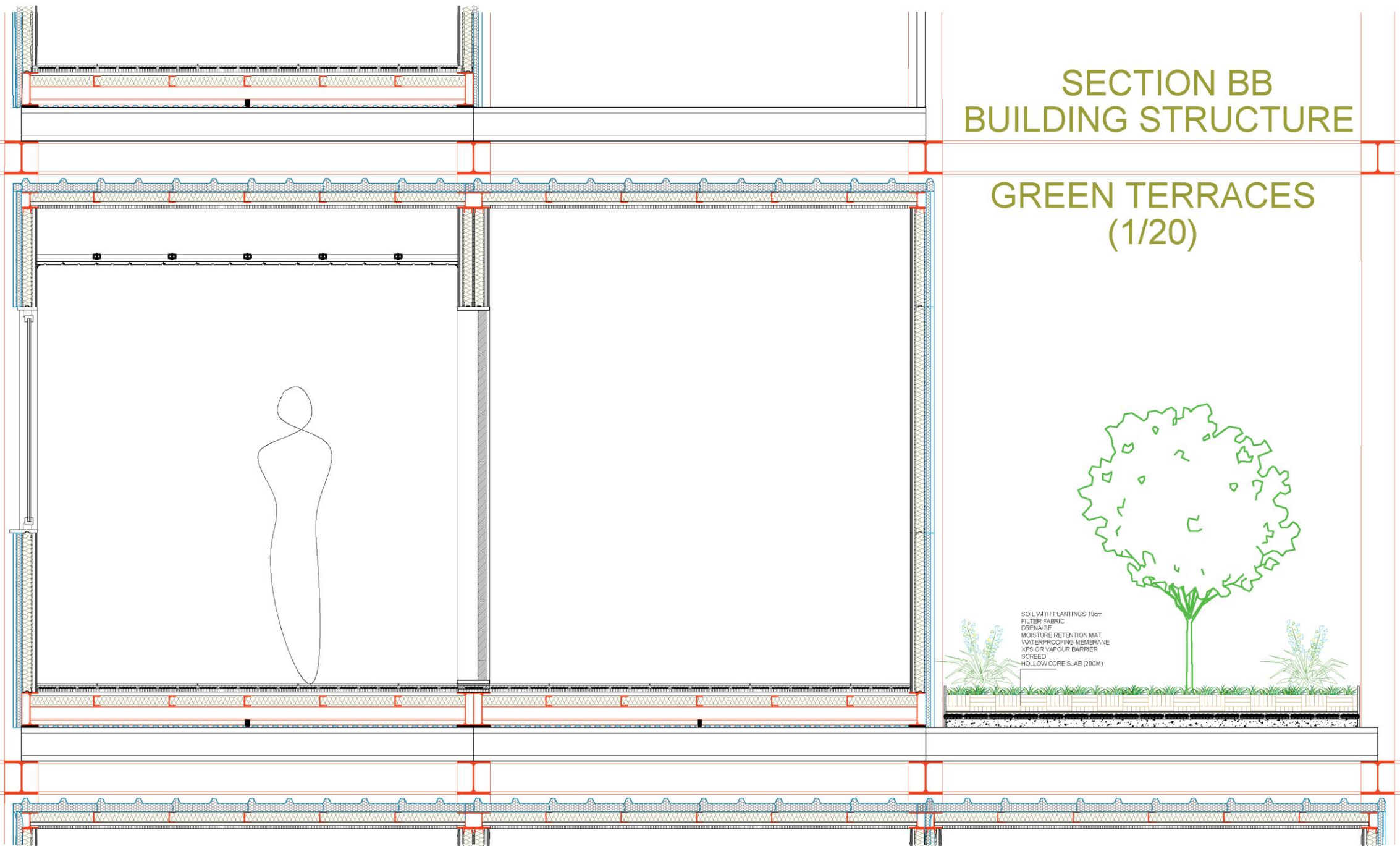
SECTION AA BUILDING STRUCTURE (HOLLOW CORE SLAB)

(1/20)



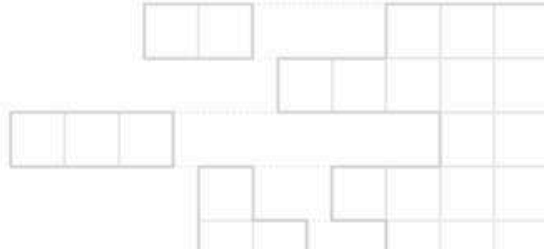
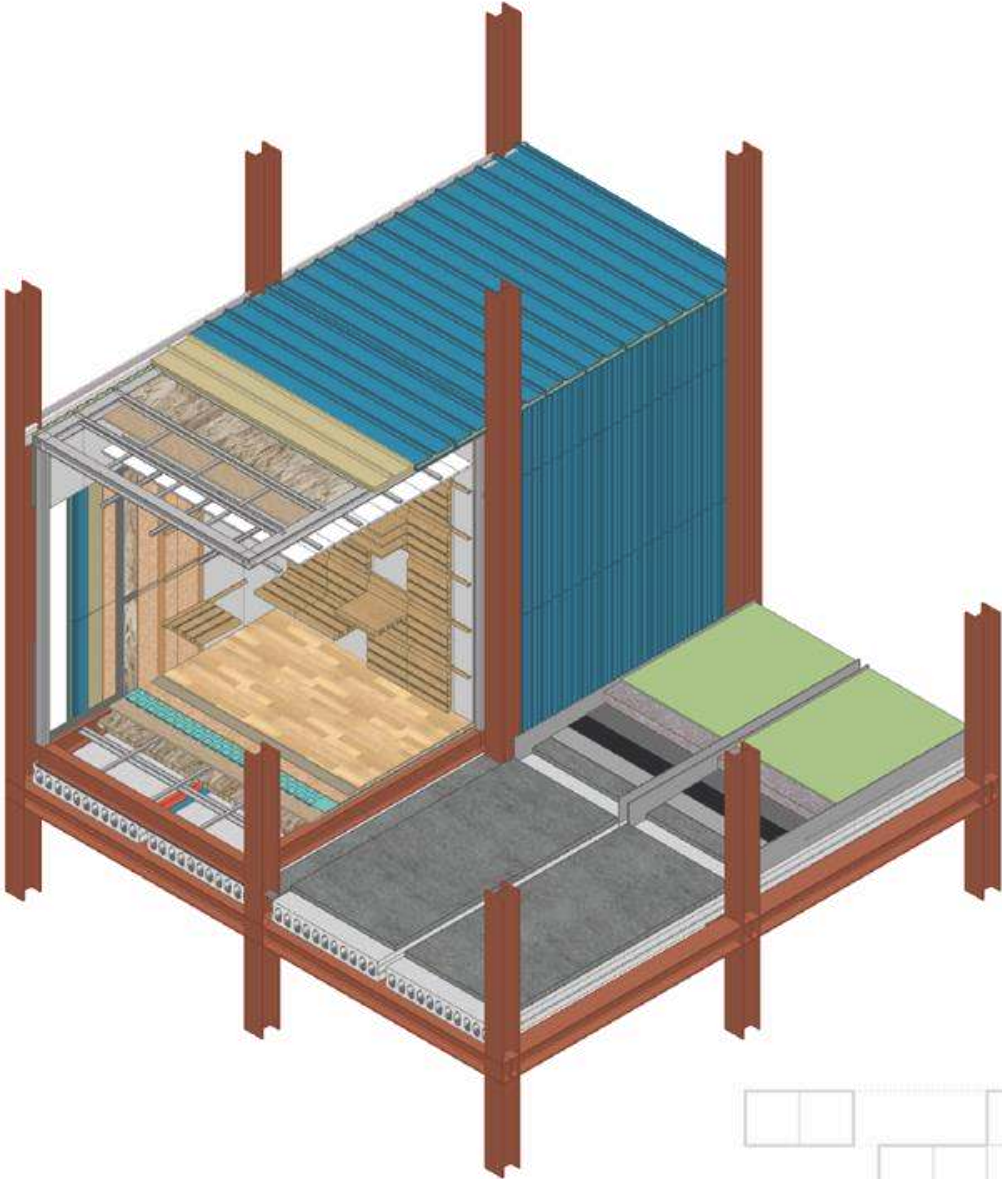
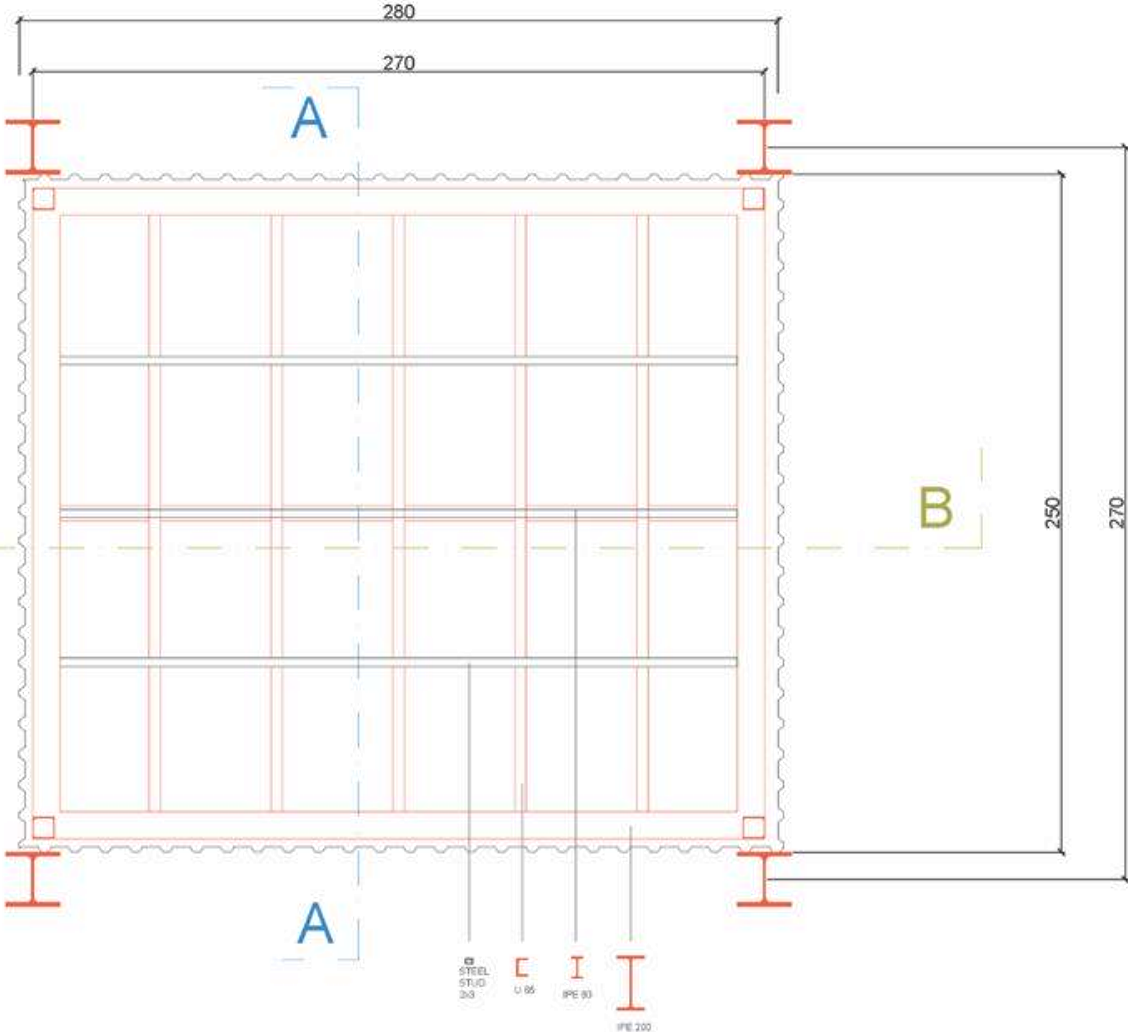
SECTION BB BUILDING STRUCTURE

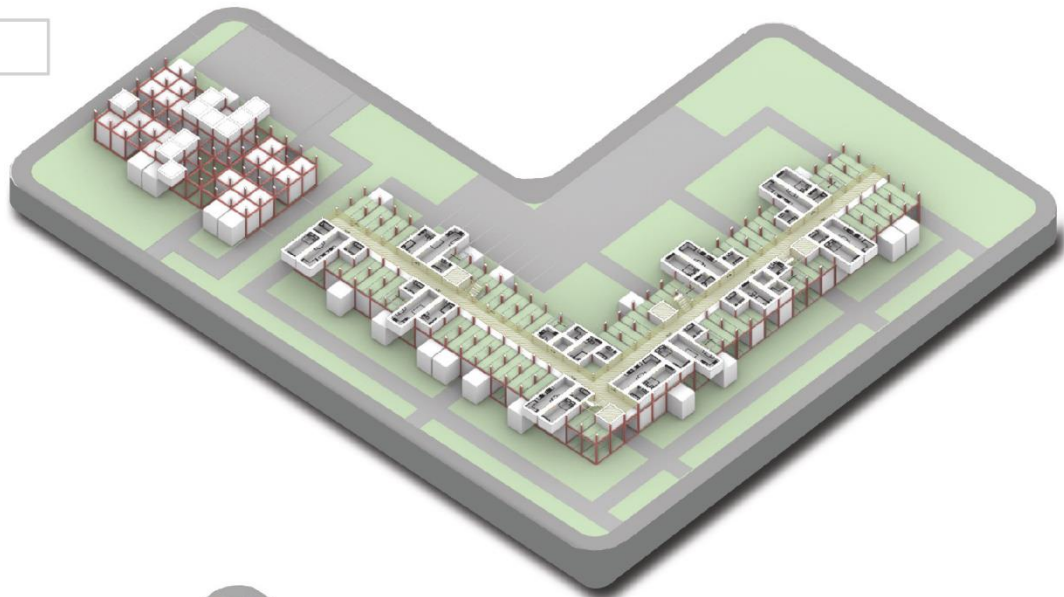
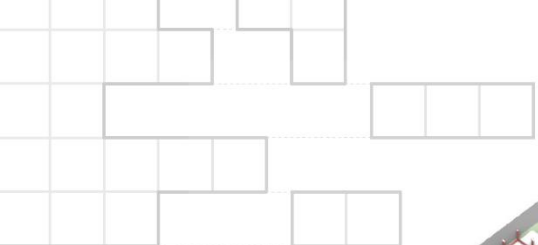
GREEN TERRACES (1/20)



UNIT'S STRUCTURE PLAN

(1/20)





BUILDING PROPOSAL (SUMMER)

- LIVING
- SLEEPING
- COOKING
- EATING
- WET
- CIRCULATION
- WORKING

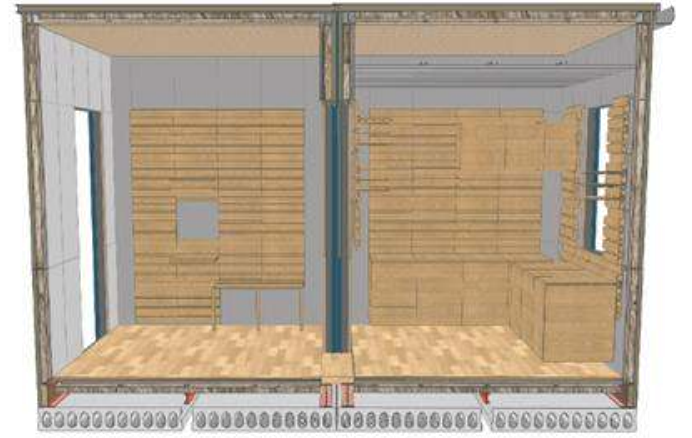
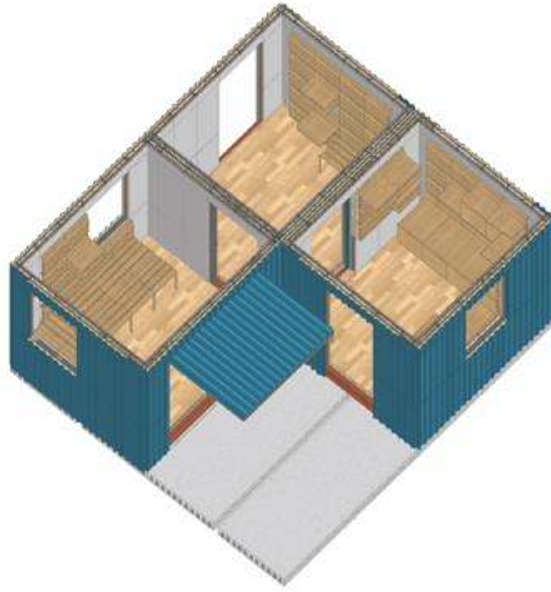
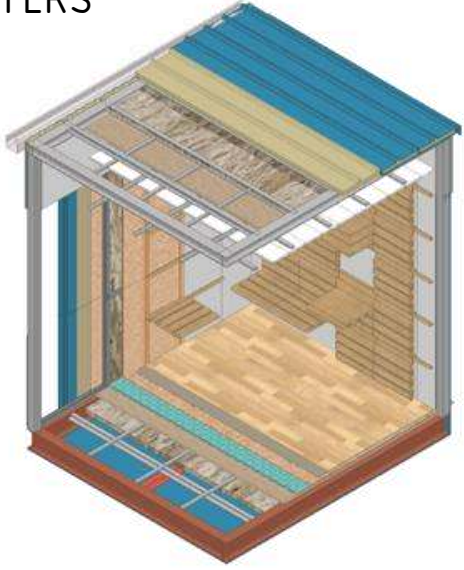


BUILDING PROPOSAL (SUMMER)

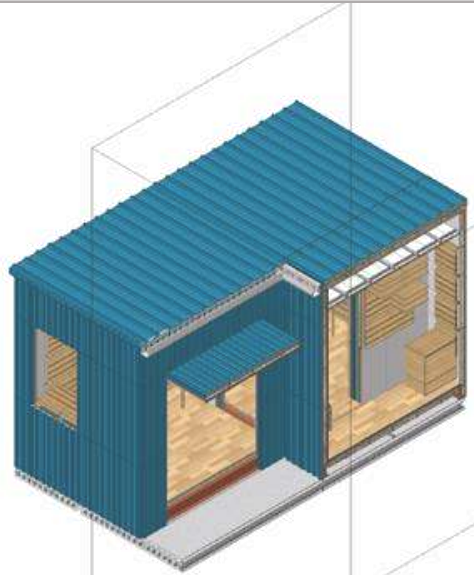
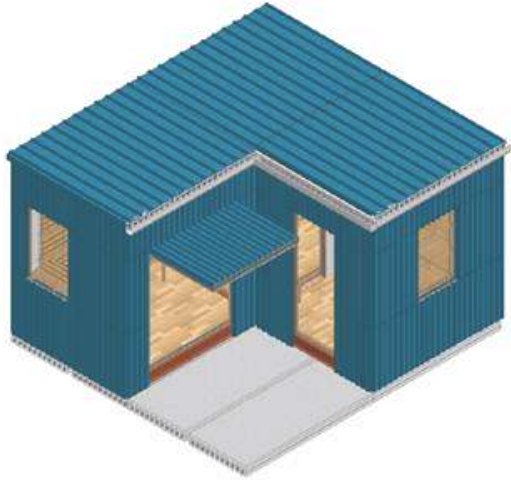
- LIVING
- SLEEPING
- COOKING
- EATING
- WET
- CIRCULATION
- WORKING



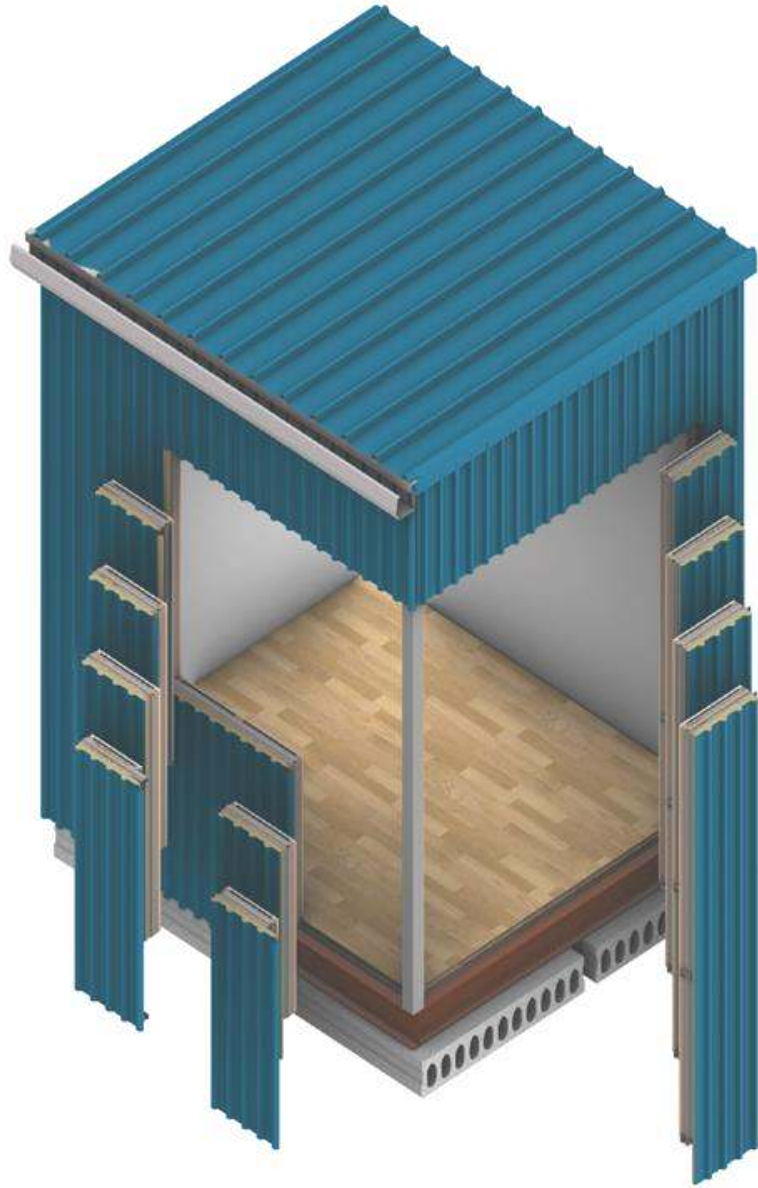
WALL LAYERS



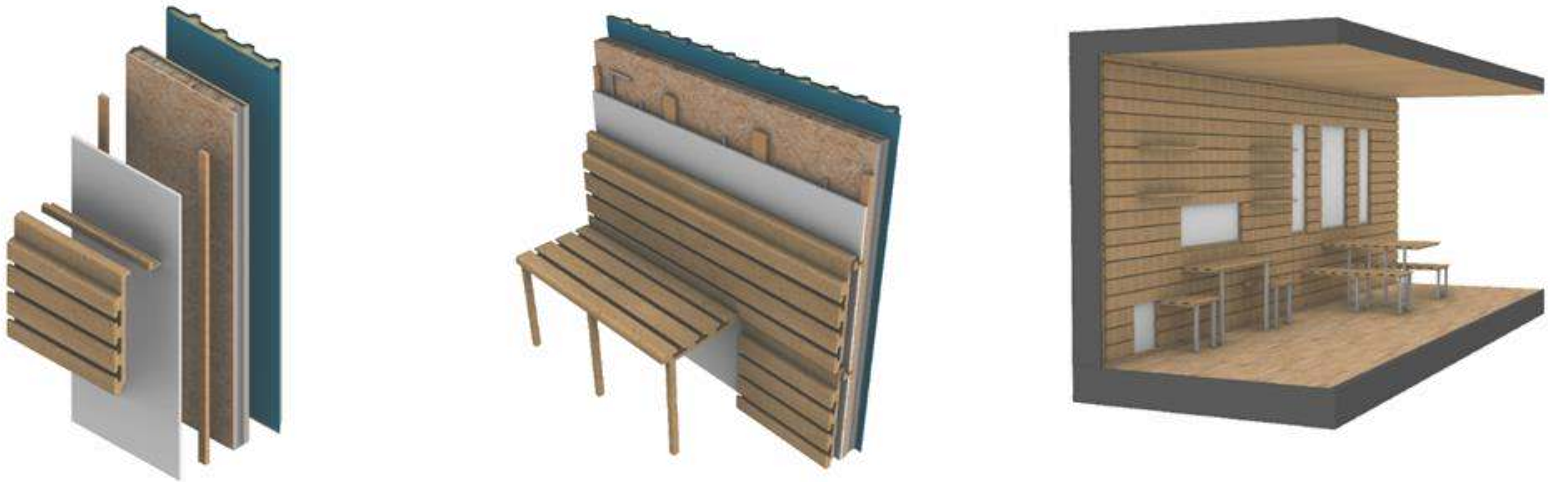
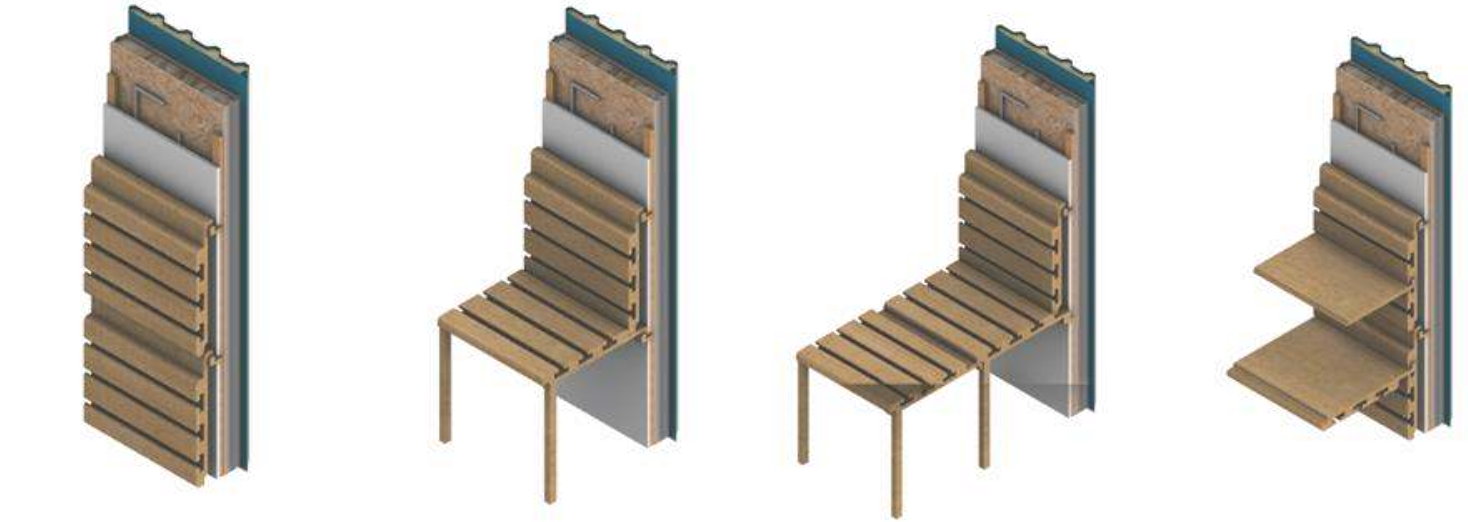
SECTION OF A HOUSING



WALL PANEL MOVEMENTS

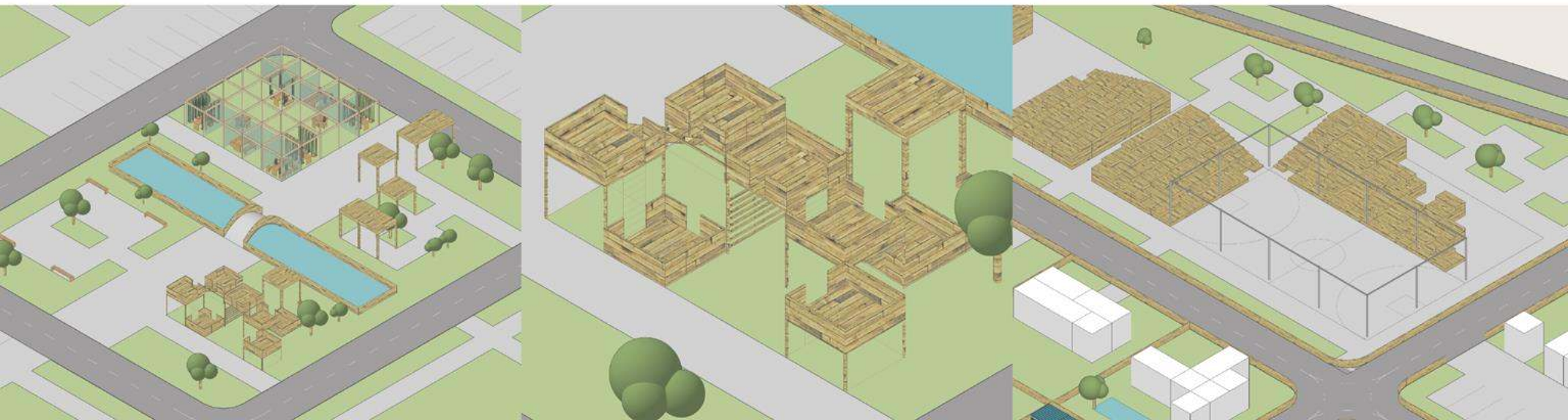


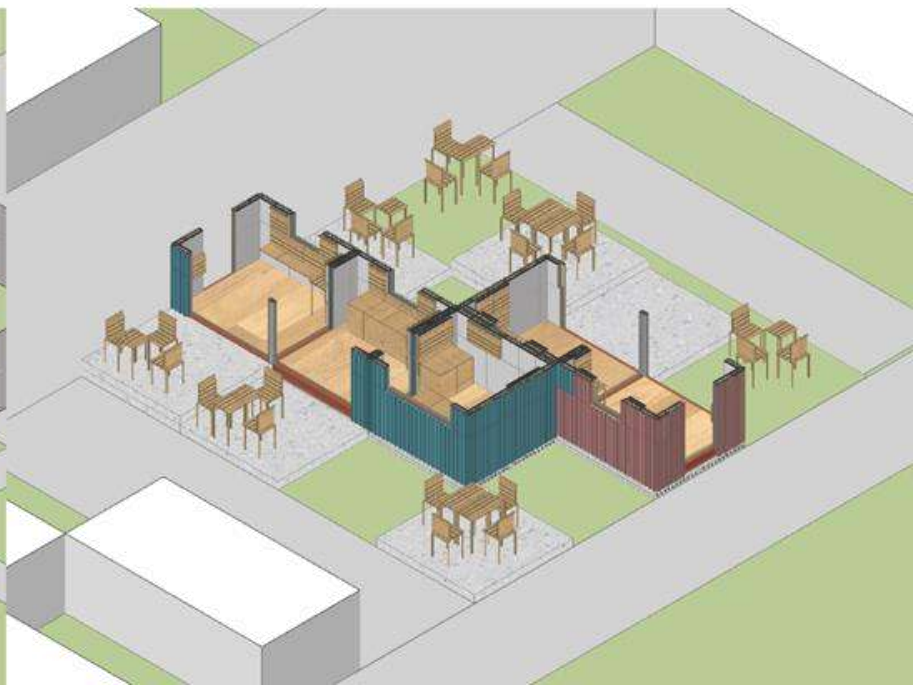
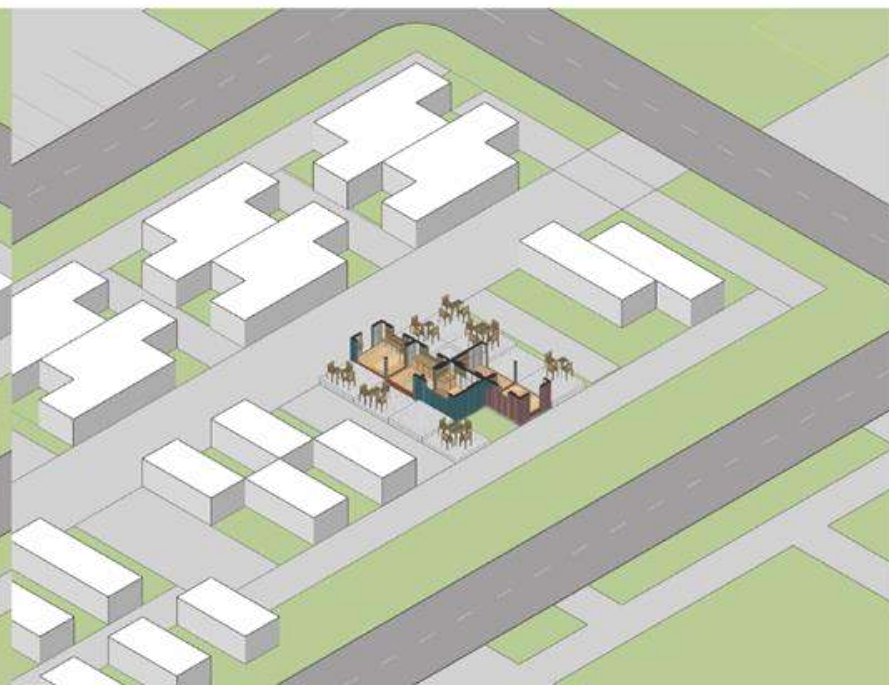
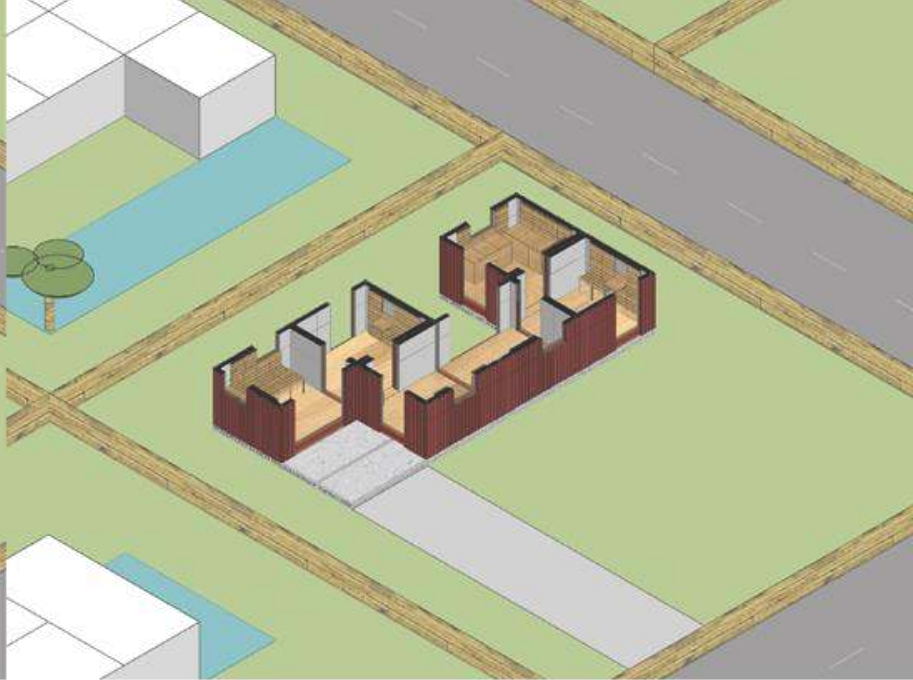
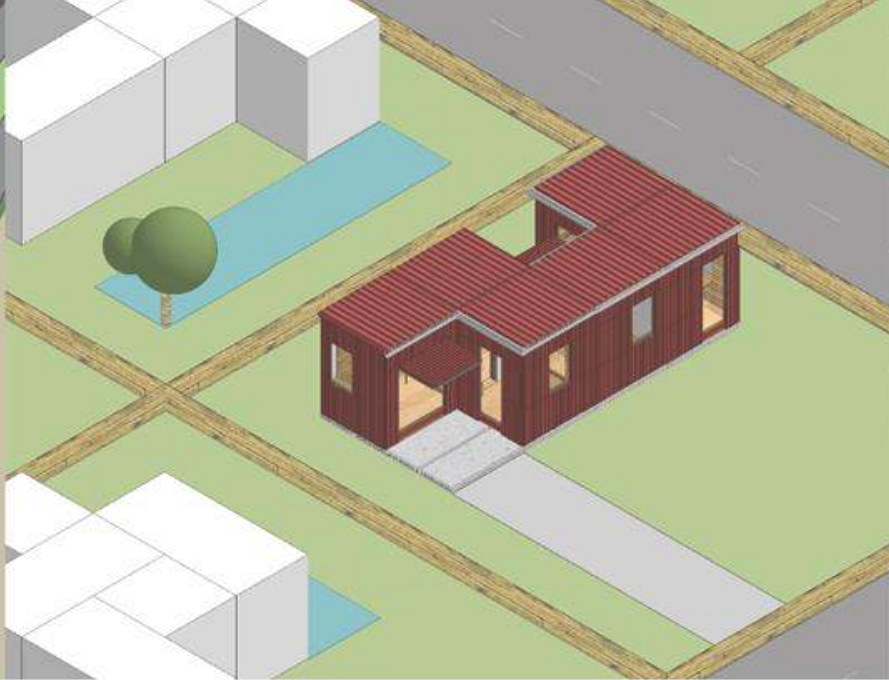
FURNITURE ADAPTATION TYPES





PUBLIC SPACE PROPOSALS









CITY PROPOSAL IN WINTER



CITY PROPOSAL IN SUMMER